

# Wide 7" Color GPS/Combo/Fishfinder

## N700/NF700/F700



 **SAMYUNG ENC Co.,Ltd.**



# N700

## Wide 7" GPS Color Chartplotter

- Wide 7" High resolution TFT LCD
- 10 steps adjustable LED backlight
- NAVIONICS® GOLD using SD card
- 128MB internal memory and built-in standard Samyung chart
  - Individual button for navigation GOTO and MOB
- Multiple languages available including English, Chinese, Russian, Thai, Malay etc.
- DGPS(WAAS, MSAS, EGNOS)

**Wide 7" High resolution TFT LCD !!**

**Function by using icon for menu !!**

**Four split screen presentation !!**



- Save a chart image on internal memory (128M)
- Save internal data on SD card
- View and print saved data on SD card



# NF700

## Wide 7" GPS Color Chartplotter+Fishfinder

- User-friendly operation type by using icon for each menu
  - NMEA0183 interface (AIS, NAVTEX, DSC etc.)
  - 4 split screens (Chart, Data, Highway, Fish-finder)
- Using dual frequency (50/200Khz) for detection of small and individual fish
  - Clearly shows fish targets close to the seabed by Split zoom/Split bottom (Output: 600W, Max. depth: 600M)

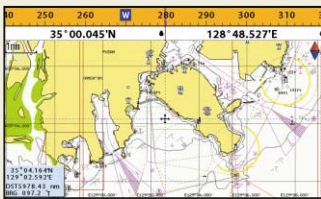




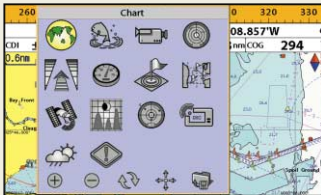
# F700

## Wide 7" Color Fishfinder

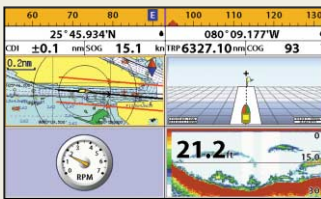
- Fast screen response by high performance CPU
  - Suitable for small fishing boat
- Easy to distinguish fish on bottom by digital enlargement
  - Reinforce fish detection by auto pulse
  - Detect fish by high data transmission
  - Easy to use by auto gain



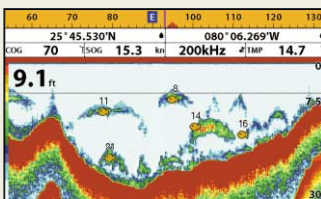
- All NAVIONICS® GOLD features on high resolution LCD.
- AIS information on chart plotter by connecting to compatible AIS receiver (NMEA0183)



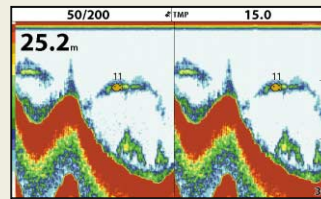
- Choose a page / function by using icon for menu
- Various icons



- Four split screen presentation available
- Display multiple functions on split screen

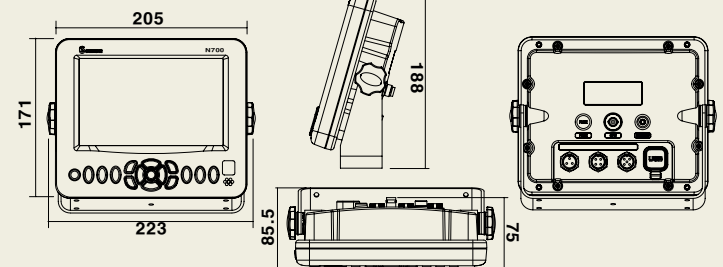


- High output power 600W built-in RMS enable to distinguish a seabed up to 600m
- Dual frequency(50/200kHz) transducer (Water temperature, speed sensor)



- Various fishfinder screen
- Zoom, Bottom lock, Full screen zoom, Bottom, 50/200, A-Scope

### ◆ Dimensions



### ◆ Component

- Main unit 1Unit
- GPS Antenna(N700/NF700) 1Unit
- Transducer(NF700/F700) 1Unit
- Installation materials, Spare parts, Manual 1Set

### ◆ Option

- NAVIONICS® GOLD • Power Supply • SD Card • Wireless Remote Control



## Wide 7" GPS Chartplotter/Combo/Fishfinder



N700

NF700

F700

Features		
Size	171 mm(H) x 205 mm(W) x 75 mm(D)	
Display	Wide 7", TFT color, 800 x 480 pixels	
Supply voltage	10 to 34 V DC	
Supply current	13.8 V, 0.8A min - no backlighting. 1A max - full backlighting.	
Operating temp.	-10°C ~ 50°C	
Alarms	Arrival radius, anchor, XTE, danger, too shallow, too deep, fish, temperature, temperature rate, low battery, low fuel(optional), loss of DGPS fix, radar guard zone, dangerous AIS vessels.	
Chart card	NAVIONICS® GOLD	-
User card	SD Card	-
Waypoints	10,000 waypoints (Event Mark : 48, Mark Color : 16)	
Routes	100 Routes, with up to 100 points each	
Tracks	By time or distance, 10 track of 5000 points	
Chart datums	216 Chart datums (see next page)	
Chart scale	0.2 ~ 500 nm	
Interface	NMEA 0183	
Frequency	-	50/200KHz
Output	-	600W
Depth Range	-	Min : 0m~3m, Max : 0m~1,500m
Color Display	-	16 colors
Brightness	-	10-step
Screen Moving Speed	-	super fast, fast, medium, low, stop
Battery Voltage Display	-	Voltage number display
AUTO GAIN adjustment	-	OFF/ON
A-Mode display	-	OFF/ON
Demo display	-	OFF/ON
Weak Color Removal	-	0%~75%

\* Specification is subject to change without notice

# SAMYUNG ENC

[www.samyungenc.com](http://www.samyungenc.com)



**SAMYUNG ENC Co.,Ltd.** Head Office : 1123-17, Dongsam-Dong, Youngdo-Gu, Busan, Korea, 606-083 Tel : 82-51-601-5530(Rep.) Fax : 82-51-413-4446  
A/S Center : 65-20, 2-Ga Namhang-Dong, Yungdo-Gu, Busan, Korea, 606-032 Tel : 82-51-601-5570-4(Rep.) Fax : 82-51-416-5515